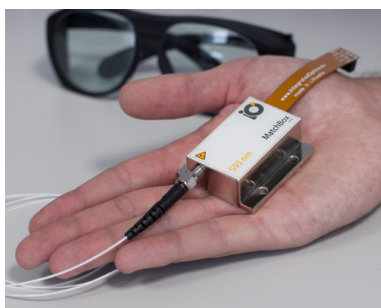


MatchBox series



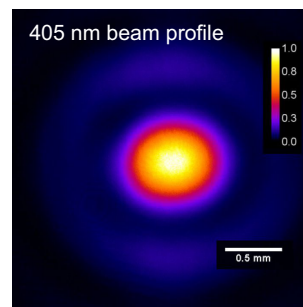
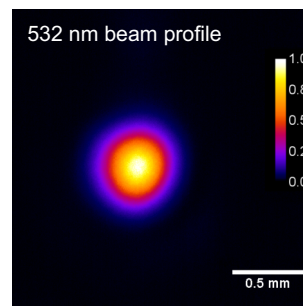
1342 nm
1319 nm
1122 nm
1064 nm
1030 nm
980 nm
975 nm
946 nm
914 nm
850 nm
830 nm
808 nm
785 nm
730 nm
671 nm
659 nm
635 nm

MatchBox™ are small form factor laser sources for biotech and diagnostics applications. Continuous wave radiation is mainly used for spectroscopy, metrology, lighting and optical alignment. Most CW sources from Integrated Optics are applicable Raman or fluorescence spectroscopy. The series includes DPSS and diode lasers, which provides many choices in consideration of beam quality, output power, output type noise, spectral bandwidth and modulation.



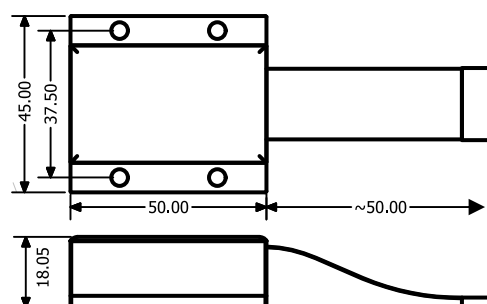
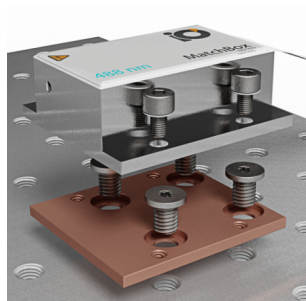
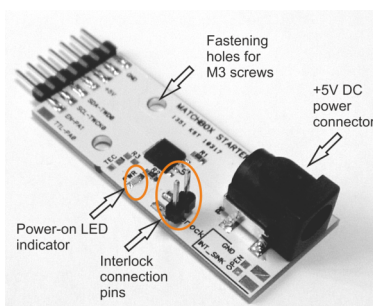
Advantages:

- Dedicated for OEM integration
- Compact and efficient
- Variety of wavelengths
- Standard size
- Self-contained design



633 nm
593 nm
589 nm
561 nm
532 nm
515 nm
500 nm
491 nm
488 nm
473 nm
457 nm
445 nm
405 nm
375 nm

Standard accessories:



MatchBox™ is an unregistered trademark of Integrated Optics, UAB



Northtown technology park
J. Galvydzio str. 5
08236 Vilnius, Lithuania

Tel: +370 602 24642
Email: info@integratedoptics.com

www.integratedoptics.com



Made in Lithuania (EU)